



Nikhil Barthwal
Tech Lead – Tools & Infrastructure, Google



[@nikhilbarthwal](https://twitter.com/nikhilbarthwal)



nikhilbarthwal@yahoo.com

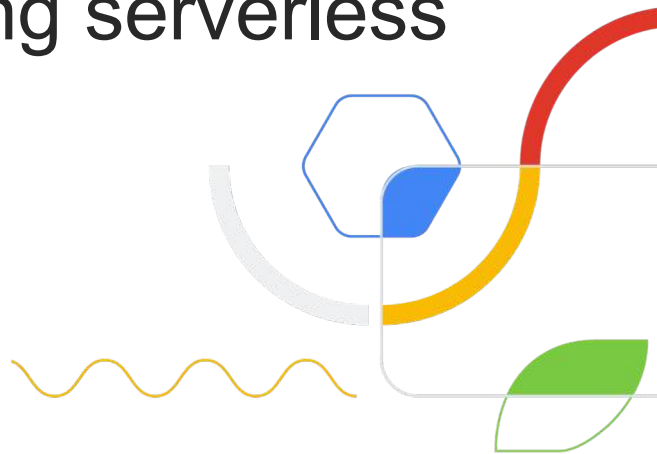


www.nikhilbarthwal.com

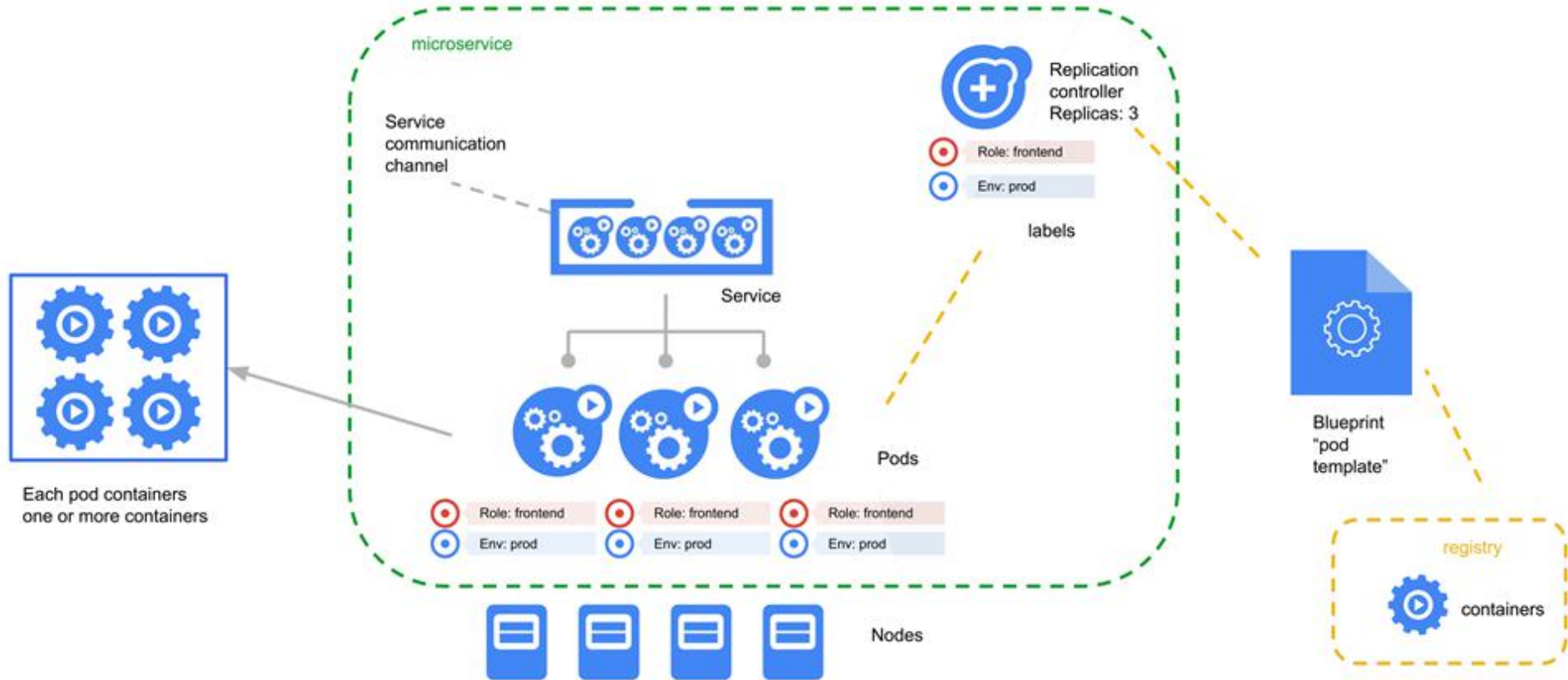


Knative:

Essential Components for building serverless Applications on Kubernetes



Kubernetes: The de facto platform



Kubernetes handles...

Scheduling

Decide where my containers should run

Lifecycle and health

Keep my containers running despite failures

Scaling

Make sets of containers bigger or smaller

Naming and discovery

Find where my containers are now

Load balancing

Distribute traffic across a set of containers

Storage volumes

Provide data to containers

Logging and monitoring

Track what's happening with my containers

Debugging and introspection

Enter or attach to containers

Identity and authorization

Control who can do things to my containers

Kubernetes ecosystem



442 Years of effort*

5,000+ Contributors

47k+ GitHub stars

*Sources: [COCOMO Model](#), [CNCF.io](#) Certified Providers

The state of affairs!



Developers want serverless

- Just want to run their code
- Want to use their favorite languages and dependencies
- Don't want to manage the infrastructure



Operators want Kubernetes

- Kubernetes is great orchestrating microservices
- They love using GKE and not having to do operations for Kubernetes
- Kubernetes is not the right abstraction for their developers

Serverless: Characteristics



Serverless



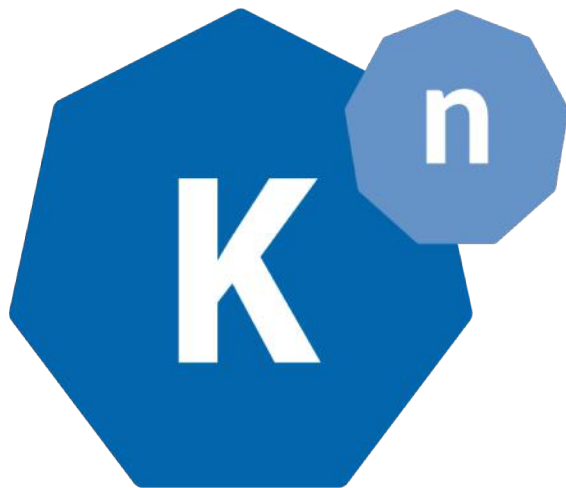
Event-Driven



Pay as you Go



Portable

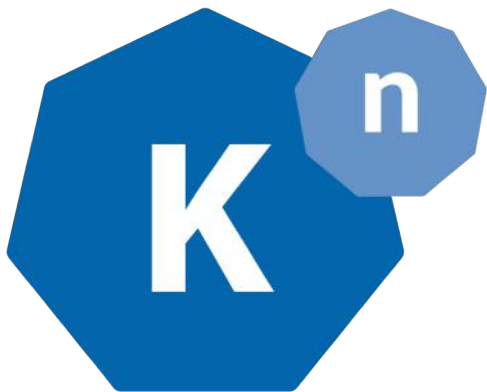


[kay-native]

Knative

Kubernetes based open source
building blocks for serverless

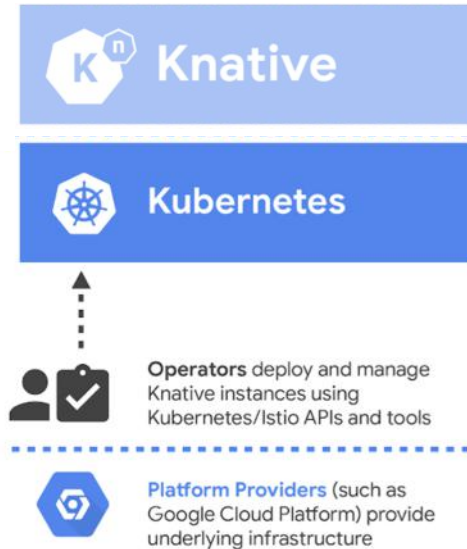
Knative project



- Set of primitives (build, events, serving...)
- Solves for modern development patterns
- Implements learnings from Google, partners
- Ingredient or platform for Serverless

github.com/knative

Knative for operator

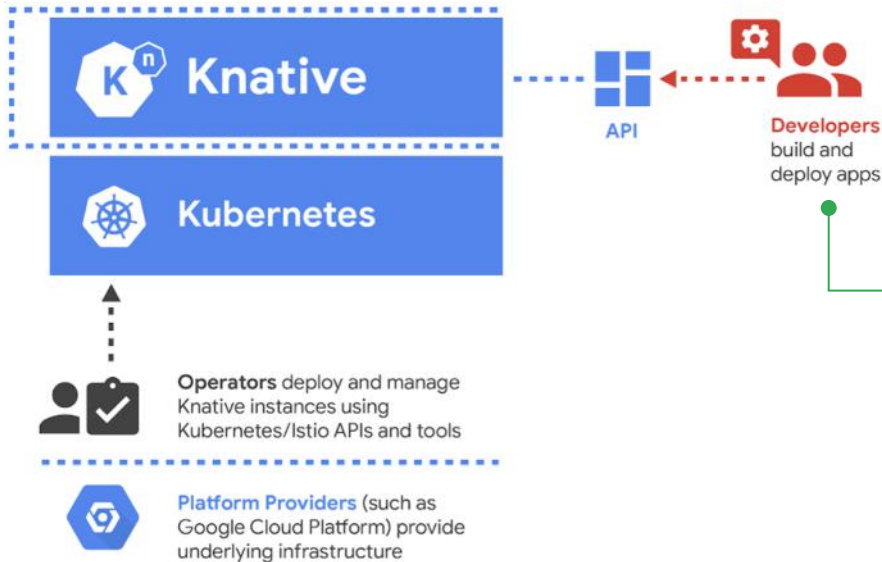


Abstracts operational complexity, smooth infrastructure surface

Universal supported by all major Cloud providers, enables portability

Extendable platform with clear separation of concerns between operator and developer

Knative for developer



Want to

Write code

Don't have to

- Build docker image
- Upload image to registry
- Deploy service
- Expose to the internet
- Setup logging & monitoring
- Scale workload...

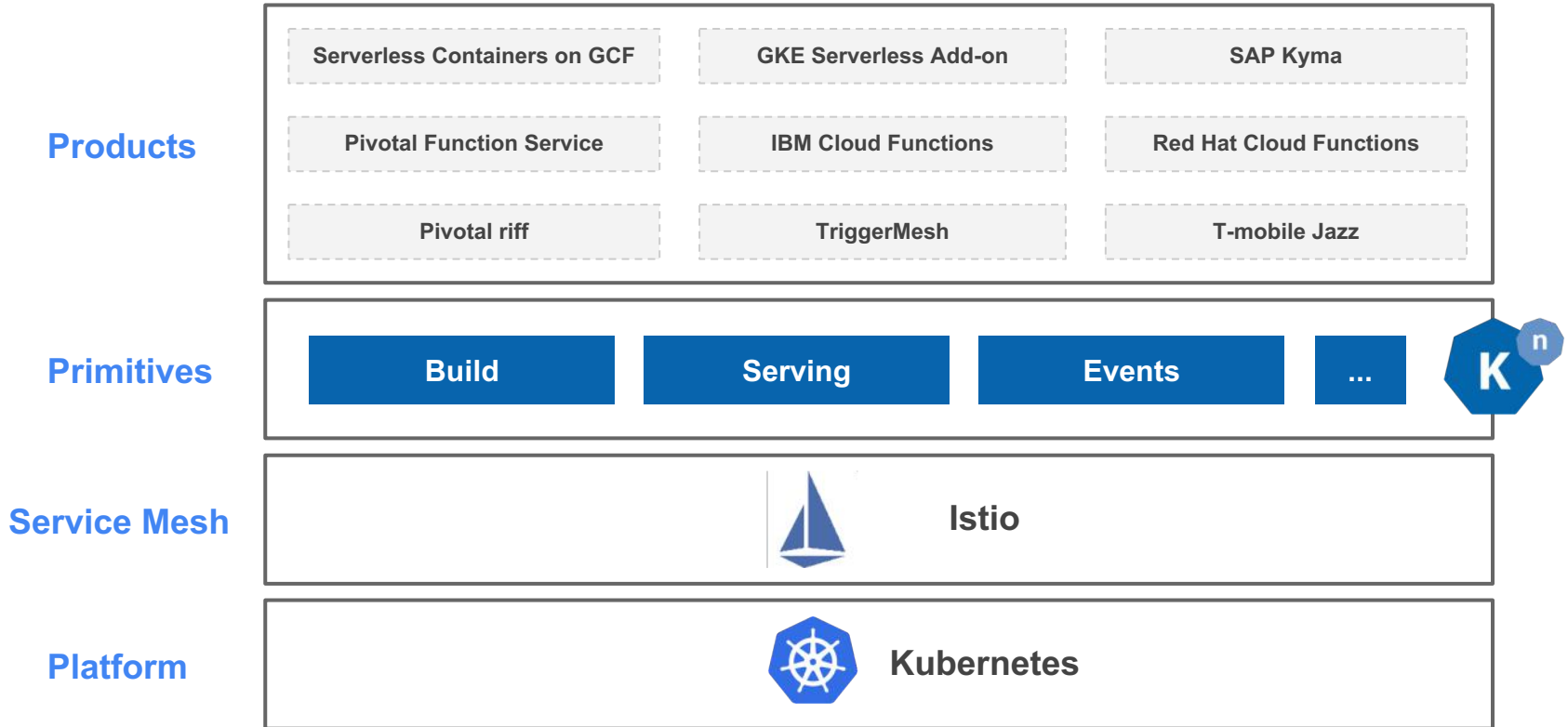
Knative launch partners



Pivotal®



Knative stack



Knative impact

“With Kubernetes, SAP Cloud Platform is making it easy for customers to embrace multi-cloud application development and deployment. **Knative further enables SAP to accelerate enterprise-grade serverless and event-based applications.** SAP Kyma is the first open source project being a lighthouse application for SAP on Knative.”

Michael Wintergerst
Vice President, SAP



Knative impact

“IBM Cloud is built on open technology, and the future of cloud will be created in the open. Combining what we’ve learned from the creation of **Apache OpenWhisk**, building serverless projects for enterprises, and our experience with Kubernetes and Istio, we plan to evolve Knative to **bring serverless to a wider range of applications, developers and industries than ever before.**”

Jason McGee

IBM Fellow and CTO, IBM Cloud



IBM Cloud

Knative impact

“Red Hat’s focus on the hybrid cloud is rooted in customer choice and we carry that same perspective to our work to make hybrid serverless a reality. By joining the Knative community, we are combining our deep enterprise Kubernetes and open source expertise to help **create a common building block for serverless on top of Kubernetes across the hybrid cloud.**”

Chris Wright

Red Hat Vice President and Chief Technology Officer



Knative impact

"We believe in providing choice for our internal customers (developers) who are building and deploying cloud native applications. And with Knative, we have been able to rapidly integrate Kubernetes-based building blocks in Jazz, our own open-source serverless toolchain. **Knative and Kubernetes and Jazz are working beautifully together to accelerate T-Mobile's move to cloud native applications.**"

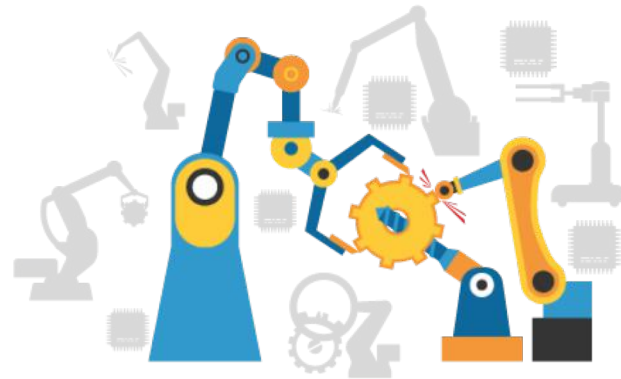
Nicolas Criss

Sr. Manager - Cloud Center Of Excellence, T-Mobile



Knative Functionality

- Wakes up workloads (activates) on request
- Scales workloads up/down based on requests (0 pods when no use)
- Turns developer app/function into a container/live URL (transparent build)
- Collects runtime metrics and exports user-space telemetry
- Automatically handles revision of code+config (rolls back if needed)
- Can split traffic and enable gradual rollouts
- Includes eventing system with configurable sources (triggers)



Knative serving



Benefits

- Seamlessly scale up and down
- Built-in traffic splitting between revisions
- Integrates networking and service mesh automatically
- Easy to reason about object model

Pluggable

- Connect to your own logging and monitoring platform, or use the built-in system
- Auto-scaler can be tuned or swapped out for custom code

Serving Primitives

Knative defines primitives with clear separation of concerns

Configuration

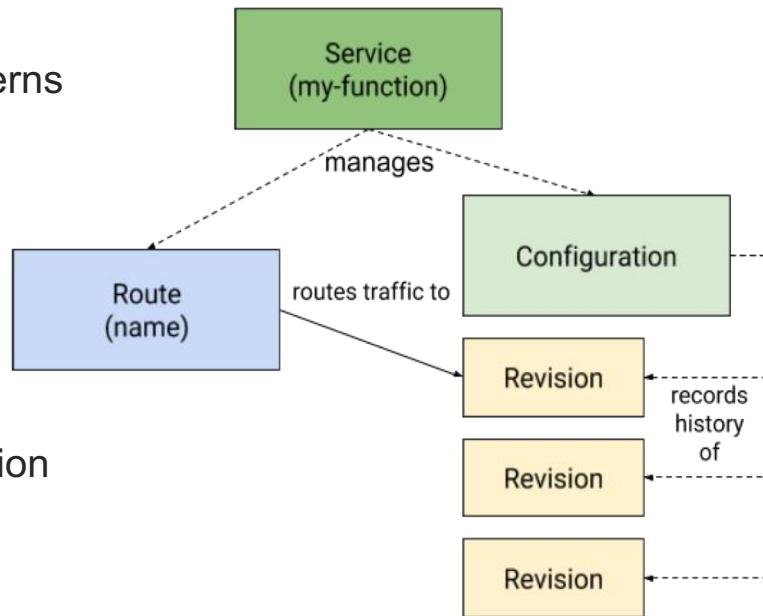
- Current/desired state for your application
- Code & configuration (separated, ala 12 factor)

Revision

- Point in time snapshots for your code and configuration

Route

- Maps traffic to a revisions
- Supports fractional, named routing

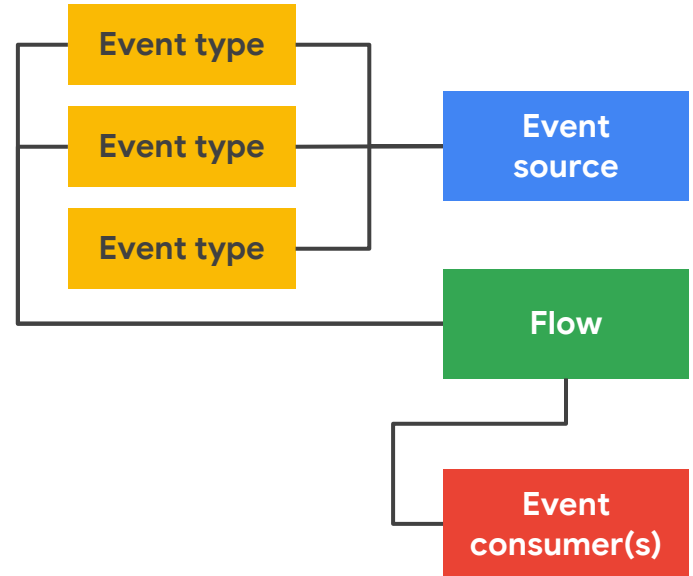


Knative Eventing

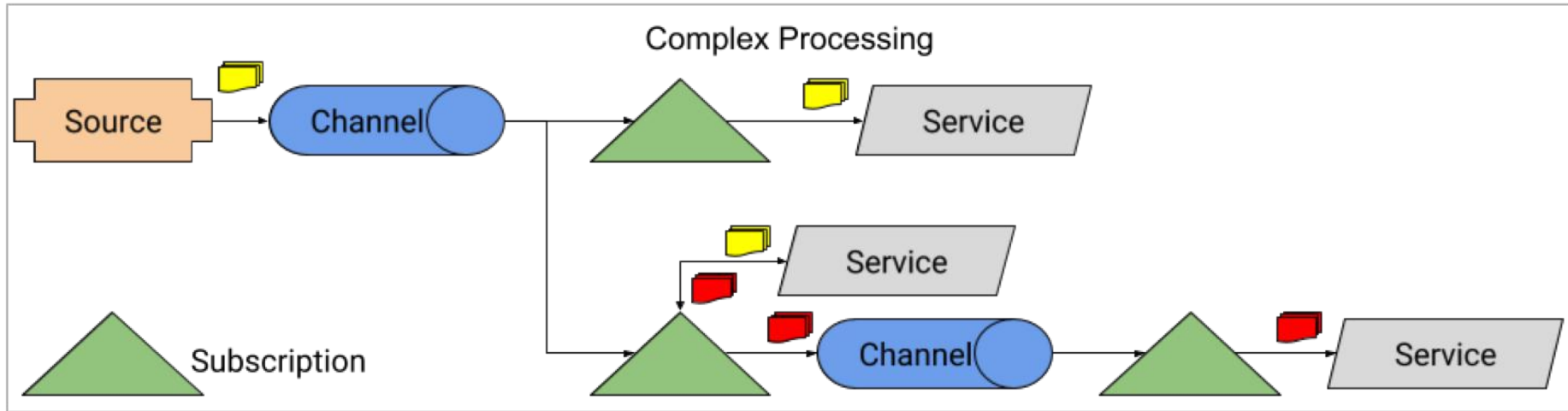
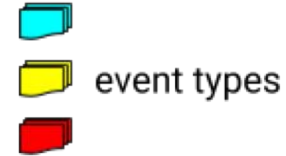
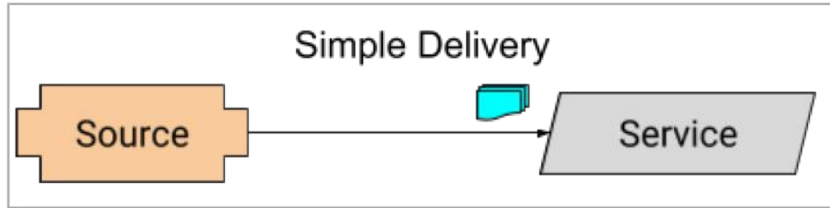
What is it?

- For loosely coupled, event-driven services
- Declaratively bind between event producers and Knative services
- Scales from just few events to live streams
- Custom event pipelines to connect with your own existing systems

KubernetesEventSource
GitHubSource
GcpPubSubSource
AwsSqsSource
ContainerSource
CronJobSource



Knative Eventing

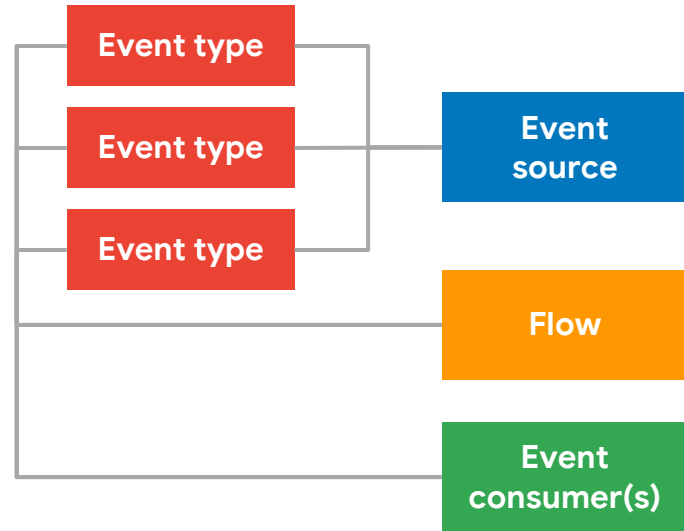


Knative: Eventing Objects

Eventing constructs :

- **Event Sources** (producer)
- **Channel** (pipelines)
- **Subscription** (configuration)

Warning: volatile development area!



Knative build



Primitives

- **Build:** Represents a single build job with 1 or more steps.
- **BuildTemplate:** A set of ordered and parameterized build steps.
- **ServiceAccount:** For auth with DockerHub etc

What is it?

- Go from source code to container images on repositories
- Build pipelines can have multiple steps and can push to different registries
- Builds run in containers in the cluster. No need for Docker locally

Knative value, today



1-step deploy

Build & deploy with less
config/code

Source to container safely
in your cluster



Auto-scale

Auto-scale your stateless
container based workloads

Scale down to zero



Manage workloads

Automatically deploys containers
and provision ingress

Go from source to URL

Knative: Ready for you!



Install, Samples, Docs

github.com/knative/docs

Have questions?

knative.slack.com

Want to contribute?

knative/docs/community

Anything else?

[@nikhilbarthwal](https://twitter.com/nikhilbarthwal)

Nikhil Barthwal
Tech Lead – Tools & Infrastructure, Google



[@nikhilbarthwal](https://twitter.com/nikhilbarthwal)



nikhilbarthwal@yahoo.com



www.nikhilbarthwal.com



Questions?

